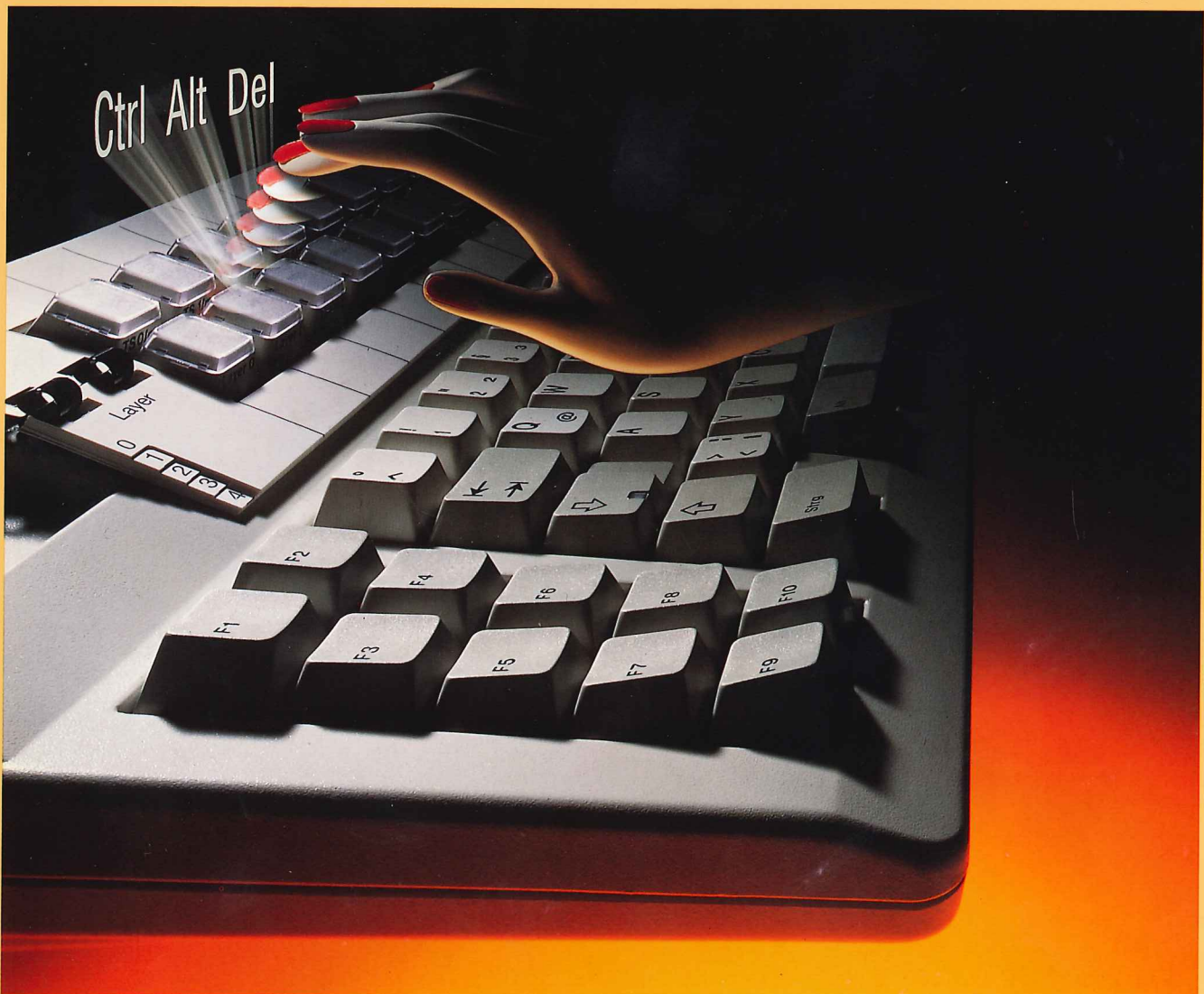




G80-2100

**IBM* compatible Comfort Keyboard
with 24 freely programmable
Function Keys. Qualified for
multilateral Applications.**

*IBM registered trademark of the International Business Machines Corporation.



General

The Cherry 2100 unites user-friendly applications in many fields of use with the tried-and-proven Cherry standard of quality. In 24 freely programmable keys in 10 layers, everything can be stored that helps to facilitate everyday work at the computer, e. g. command sequences, text blocks and other user-oriented problem solutions. A convenient download program lets users generate individual key assignments. This additional function does not require either changes to the installed hardware environment or software adjustments. The keyboard is available in layouts corresponding to all major language versions.

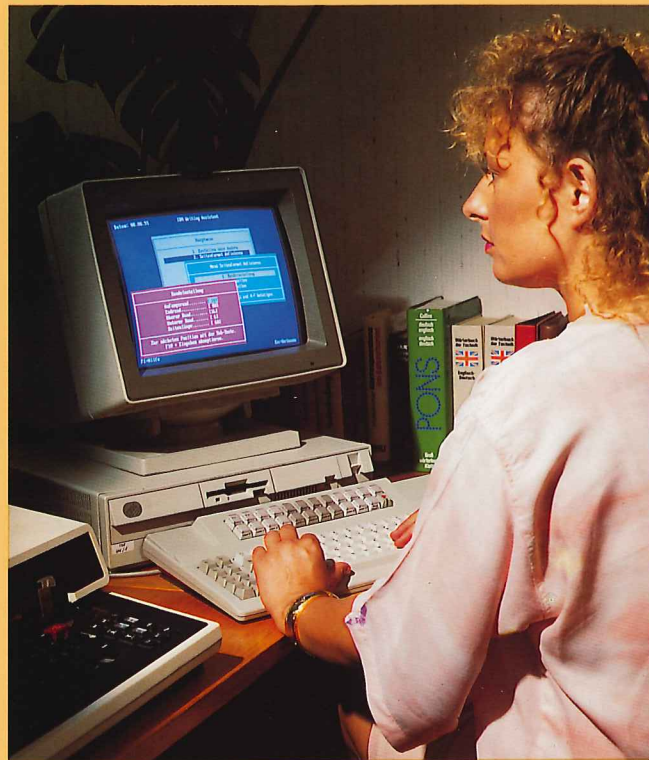
Applications

CAD

- Storage of lengthy, frequently needed command sequences.
- Generation of texts for drawings.
- Storage of plotting commands.
- Storage of elements that repeat themselves.

Programming and software generation

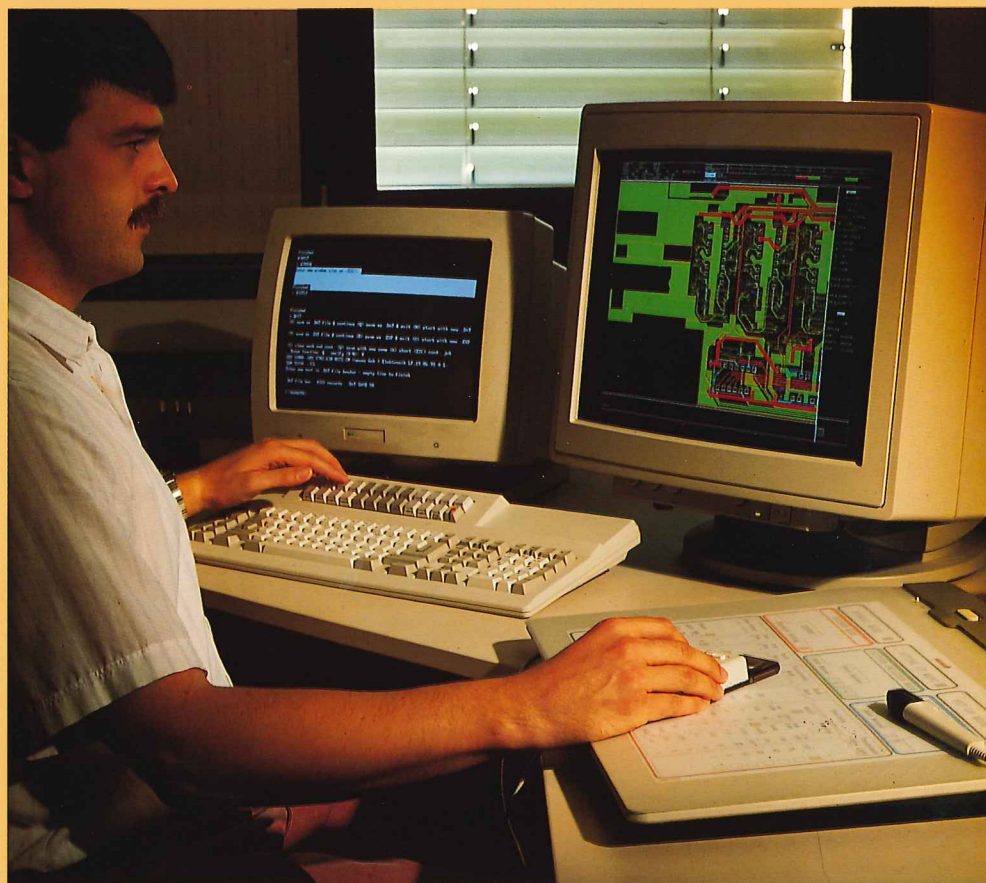
- Storage of command sequences that are required over and over again (different layers → different programming languages).
- Definition of macros.
- Generation of "hot-key" functions.



1

Word processing

- Conversion of tables into graphics files.
- Each of several users can use different layers.
- Storage of letterheads, addresses, etc.
- Generation of text boilerplates.



2



3



Picture 1
Word processing.
Picture 2
CAD.
Picture 3
Programming and developing
of software.

Reliability, long life, precise contact closure, and ergonomic design are the primary criteria for developing keyboards. Without such input devices, it would be impossible, even in the future, to communicate efficiently and painlessly with computers, multifunctional terminals or even the printer in an electronic typewriter. We offer original, practical solutions on our own contact technology, tested in action millions of times over.

All our keyboards are now available in european CFC-free environmentally friendly quality. With 100 % testing, 90 % recyclable. In all language versions. With all approvals and certifications. The bottom line is: Cherry quality won't stand for compromises.



Programming Mode

- The keyboard is equipped with 24 freely programmable function keys, which can be programmed in 10 different rows.
- Programming in on-line mode i. e. storage of all codes during input is possible.
- Storage capacity is about 2 K Byte with variable division.

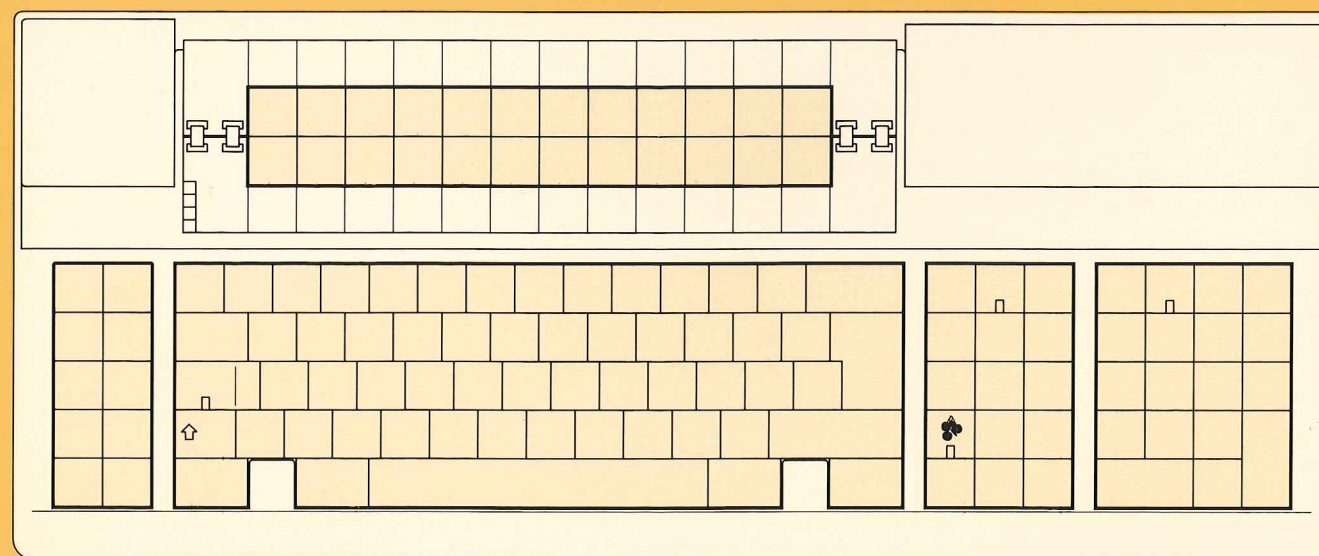
- All function keys are equipped with "re-legendable" keycaps.
- Programming mode lockable via DIL switch.
- Output speed of programmable codes adjustable.

Down-Load-Software

- Easy Programming under cover of Pull-Down-Menus.
- Generating and Storing of application-files.

- Easy loading and taking in of application-files into the AUTO EXEC.BAT
- The programmed key symbols are depicted on the screen.

Country Specific Version G80-2100 HC*



For detailed information regarding specific country layouts please refer to our brochure "Multi Function Keyboard Layouts".

Ordering Code

US-English	German	French
G 80-2100 HCU	G 80-2100 HCD	G 80-2100 HCF

Technical Specifications

Electrical Data

Power supply: +5V/DC \pm 5%, typ. 200mA, SELV.

Interface: Bidirectional, serial synchronous. The keyboard communicates via clock- and data line with the system.

Data output: Open collector TTL.

Data buffer: All codes are buffered before sent out.

Automatic repeat function: All keys have an automatic repeat function. Delay time and repeat sequence can be modified through system (fixed for PC mode; 10Hz after 500ms delay). Indication of status of operation through LED for NUM LOCK, CAPS LOCK, Programming mode and SCROLL LOCK.

For PC, XT, AT and PS/2 systems.

Mechanical Data

Housing Dimensions (L x W x H):

518 mm x 215 mm x 59 mm (19 mm).

Linear feel of keyswitch actuation.

Superior MX keymodules with 4 mm full travel and 'Gold Crosspoint' contacts.

Temperature ranges:

Storage temperature:

-40°C (-40°F) to

+65°C (+140°F)

Operation temperature:

0°C (+32°F) to

+50°C (+122°F)

Approvals

- RFI/EMI: FCC Part 15, Subpart J, Class B, DBP Vfg. 1046/1984 (VDE 0871, Class B) CISPR 22/EN 55022
- ESD: IEC 801-2: 15 kV
- Ergonomy: ZH 1/618 DIN 2137, Part 2
- Safety: UL 1950 CSA C22.2 No. 220



Post Vfg. 1046/1984 (VDE 0871, Klasse B)

CISPR 22 EN 550 22

FCC Part 15 Subpart J Class B

Environmental Impact

- Only fully recyclable plastics made without CFCs are used in the keyboard.
- No solvents employed.
- Modern manufacturing techniques to cut down on energy consumption.

General Advice

Cherry continually optimises its products in accordance with technological developments. We therefore reserve the right to make any technical alterations.

The establishment of reliability as well as the definition of technical details takes place according to Cherry's internal examinations, which comply with generally recognised regulations or norms. Requirements which deviate from these norms are to be covered through the determined operating conditions by the user. If necessary, we are also available to help.

Improper handling, storage, external influences and/or further processing can lead to disturbances and defects during use. We stress that we do not grant any warranty or accept any liability if our product is altered by the user, the exception being that this is released expressly in writing for the specific case of use. This is also especially valid if repairs and maintenance work have not been carried out by trained personnel.

Possible compensation claims against us, whatever the legal justifications, are out of the question as long as they do not concern intent or negligence on our behalf. The abovementioned restriction does not apply to compensation claims, according to the Product Liability Law. The following operating instructions are only valid for the accompanying product.

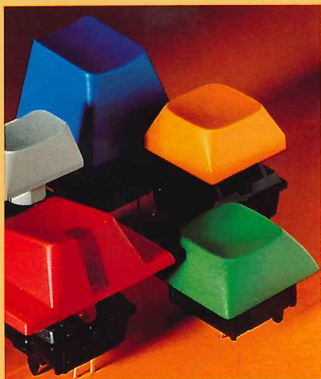
Electrotechnical and Electronic Products for the Future.

Keyboards of high technology and excellent quality.

With high switching reliability even during speed typing. Standard or customized, intelligent or non-encoded versions. Connectable to all popular EDP systems. Modern design. Harmonious colours. Variety of sizes and heights. Ergonomic styling. With or without housing.

Keymodules. For high technology keyboards.

M 8, M 9, MX. Keyswitches with exceptional performance. High switching reliability through »Gold Crosspoint« contacts. Low profile design. Excellent touch feeling. Variety of keycap styles and colours. Ideal for ergonomically designed keyboards.



Selector switches with proven reliability and long life.

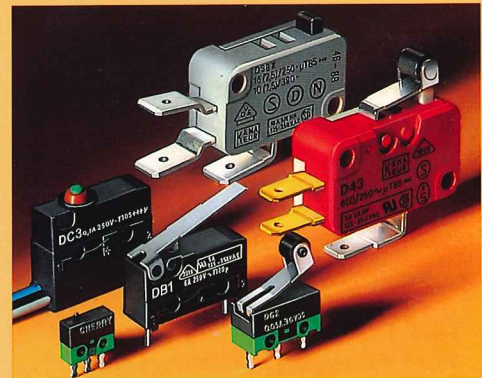
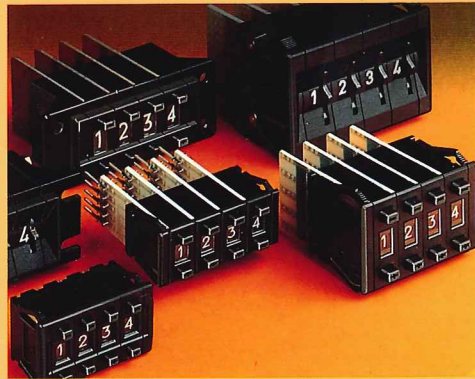
Available in many standard and customized codes. Thumbwheel, leverwheel or pushwheel versions. Gang assemblies. Solderpins, connectors or plain soldering. Standard, miniature and subminiature sizes. Also illuminated through LEDs or lamps. Customised lettering and stop limitation available.

Snap switches for the future.

For precise switching and high reliability. Large range of standard and non-standard models. Many different connecting possibilities. Standard, miniature and subminiature sizes. And a large number of auxiliary actuators.

New generation displays.

For text and graphic applications. With continuous brightness of all letters. Stable display picture. Long life. Slim profile. Light weight. Low power consumption.



Cherry Mikroschalter GmbH

Cherrystrasse
P. O. Box 1220
D-91271 Auerbach/Opf.
Phone: (0 96 43) 18-0
Telex: 631 635 cher d
Telefax: (0 96 43) 18-2 62

Cherry Electrical Products Ltd.

Coldharbour Lane
Harpenden Herts.
GB-AL 5 4UN
Phone: (05 82) 76 31 00
Telefax: (05 82) 76 88 83

Cherry Sàrl

1. Avenue des Violettes
Z. A. des Petits Carreaux
F-94384 Bonneuil/M. cedex

Phone: 1-43-77-29 51
Telex: 262657 cher f
Telefax: 1-43-77-20-84

Cherry Electrical Products

3600 Sunset Avenue
Waukegan, Illinois
USA 60087

Phone: (708) 662-9200
Telex: 650-299-7605
Telefax: (708) 662-2990