

compact switch light

snap action series S570

momentary, **S570**
 alternate, **S571**
 alternate, **S572**
 (remain in)

EMC HAS NO EQUIVALENT TO THIS SERIES

Series S570 is a compact, snap-action DPDT switchlight with an independent lamp circuit. This 'two form C' switch is ideal for reliable power circuit operation where snap action is preferred. The S570 is a rugged switch (designed to meet MIL-S-22885) that has been increasingly applied in the most demanding commercial/industrial applications.

options

Series S570 is available with a choice of three actions: momentary, alternate or alternate (remain in). A sub-panel mount switch, S570 can be mounted in Single and Multi-Light gangswitch frames (pages 28 thru 33)

standard modifications

To meet most custom switch design requirements, Clare-Pendar offers many modifications to Series S570. Each variation from the standard series is coded by a two-digit suffix. The more frequently used modifications are explained in detail on pages 22-23. All modifications are shown in the Modification Grid on the inside back cover.

S570 specifications

electrical

CONTACT RATING (at 28 VDC).....2 amp resistive
 0.5 amp inductive
 (at 125 VAC).....1 amp resistive
 CONTACT BOUNCE.....500 microsecond nominal
 CONTACT RESISTANCE.....0.015 ohm initially
 0.025 ohm after life
 DIELECTRIC STRENGTH.....1000 VRMS
 INSULATION RESISTANCE.....1000 megohm at 500 VDC
 LIFE (at rated load).....50,000 cycles

mechanical

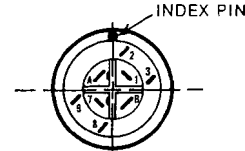
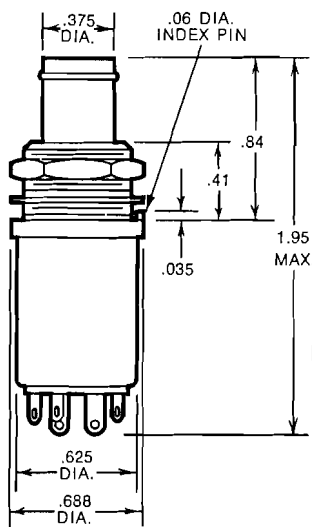
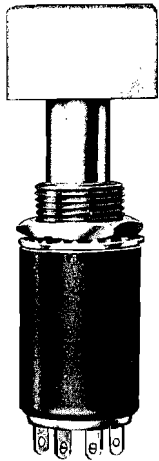
WEIGHT.....14 ±2 gm.
 PLUNGER TRAVEL.....0.125 ±0.02 in.
 LENS RETENTION.....4 ±1 lb.
 OPERATING FORCE.....32 ±16 oz.
 HARDWARE SUPPLIED.....Hex nut (1/8-32) and lockwasher.

environmental

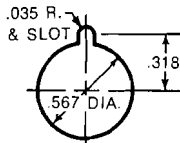
(Operative after exposure to MIL-STD-202 tests)

Description	Method	Condition
*Salt spray, 48 hours at 5% solution.....	101	A
*Moisture Resistance, full 240 hour test..	106	240 hr.
Thermal Shock, -55°C to +85°C.....	107	A
Vibration, 10 to 500 Hz at 10 G.....	204	A
Mechanical Shock, 50 G, half sine, 11 ms.....	213	A

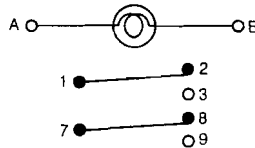
*When D4 or D5 modification is incorporated



terminal arrangement



panel mounting dimensions



power switch light

snap action series S610

momentary, **S610**
 alternate, **S611**
 alternate, **S612**
 (remain in)

Series S610 is a heavy duty, snap action double break switchlight with an independent lamp circuit. This 'two form Z' switch is ideal for reliable higher power circuit operation where snap action is preferred. The S610 is a rugged switch that meets the challenge of high current in a small package.

options

Series 610 is available with the choice of three actions: momentary, alternate or alternate (remain in). A sub-panel mount switch, S610 can be mounted in Single Light interlocked gangswitch frames (pages 28 thru 33).

standard modifications

To meet most custom switch design requirements, Clare-Pendar offers many modifications to Series S610. Each variation from the standard series is coded by a two-digit suffix. The more frequently used modifications are explained in detail on pages 22-23—all modifications are shown in the Modification Grid on the inside back cover.

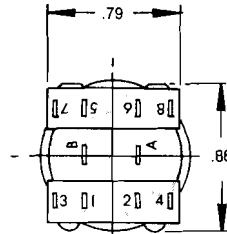
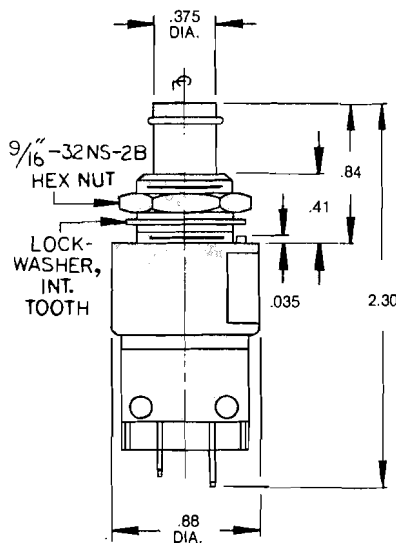
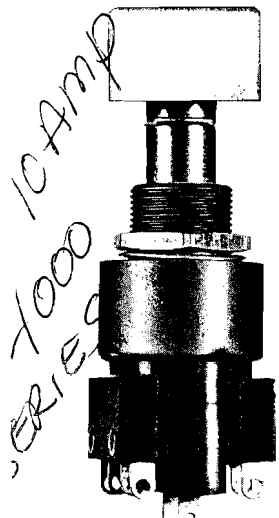
S610 specifications

electrical

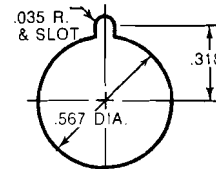
CONTACT RATING (at 28 VDC or 125 VAC).....10 amp resistive
 DIELECTRIC STRENGTH.....1000 VRMS
 INSULATION RESISTANCE.....1000 megohm at 500 VDC
 LIFE (at rated load).....100,000 cycles

mechanical

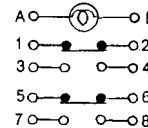
PLUNGER TRAVEL.....0.187 ±0.02 in.
 LENS RETENTION.....4 ±1 lb.
 OPERATING FORCE.....32 ±12 oz.
 HARDWARE SUPPLIED.....Hex nut (9/16-32) and lockwasher.



terminal arrangement



panel mounting dimensions



Electro-Mech Components, Inc.
 1826 Floradale Avenue
 South El Monte, CA 91733-3689 USA
 Phone: (626) 442-7180 * Fax: (626) 350-8070
 Email: info@electromechcomp.com